

The LIDO - 2 Bedroom + Den

Interior: 1036 square feet - Terrace: 242 square feet - Total: 1278 square feet

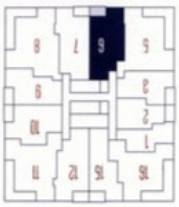


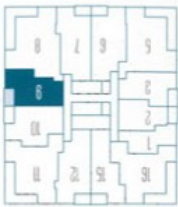
Sizes and specifications are subject to change without notice. E.A.G.E. Actual usable space may vary from any stated floor area. All dimensions are subject to normal construction variances. Measurements of rooms set forth on any floor plan are generally taken at the greatest points of each given room (as if this room were a perfect rectangle), without regard for any cutouts. Floor measurements were calculated on the middle floor of typical floor plates.



The SAGAMORE - 2 Bedroom + Den
 Interior: 854 square feet - Terrace: 55 square feet - Total: 909 square feet

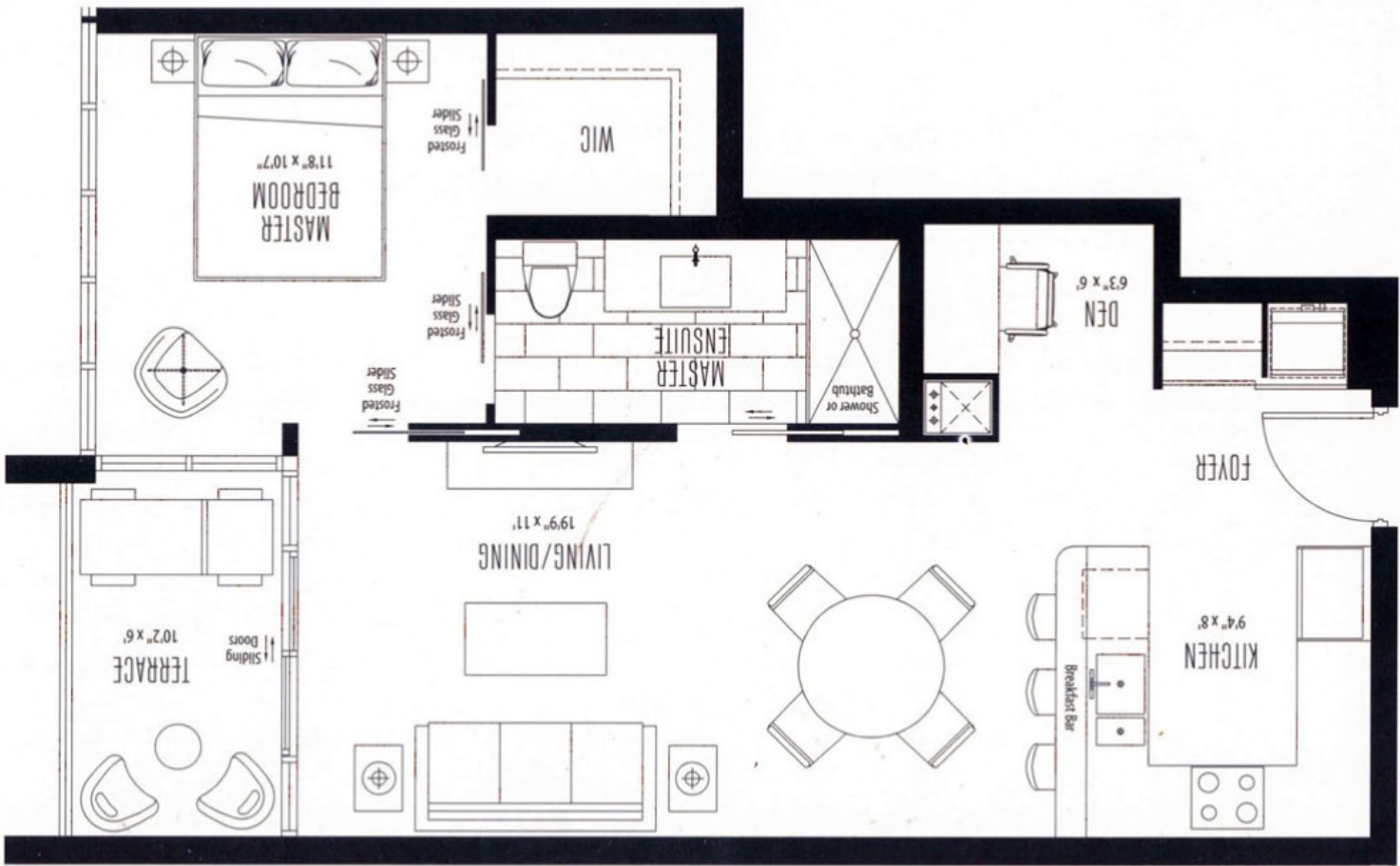
Sizes and specifications are subject to change without notice. E.M.I. Actual usable space may vary from any stated floor area. All dimensions are subject to normal construction variances. Measurements of rooms set forth on any floor plan are generally taken at the greatest points of each given room (as if the room were a perfect rectangle), without regard for any closets. Floor measurements were calculated on the middle floor of typical floor plates.



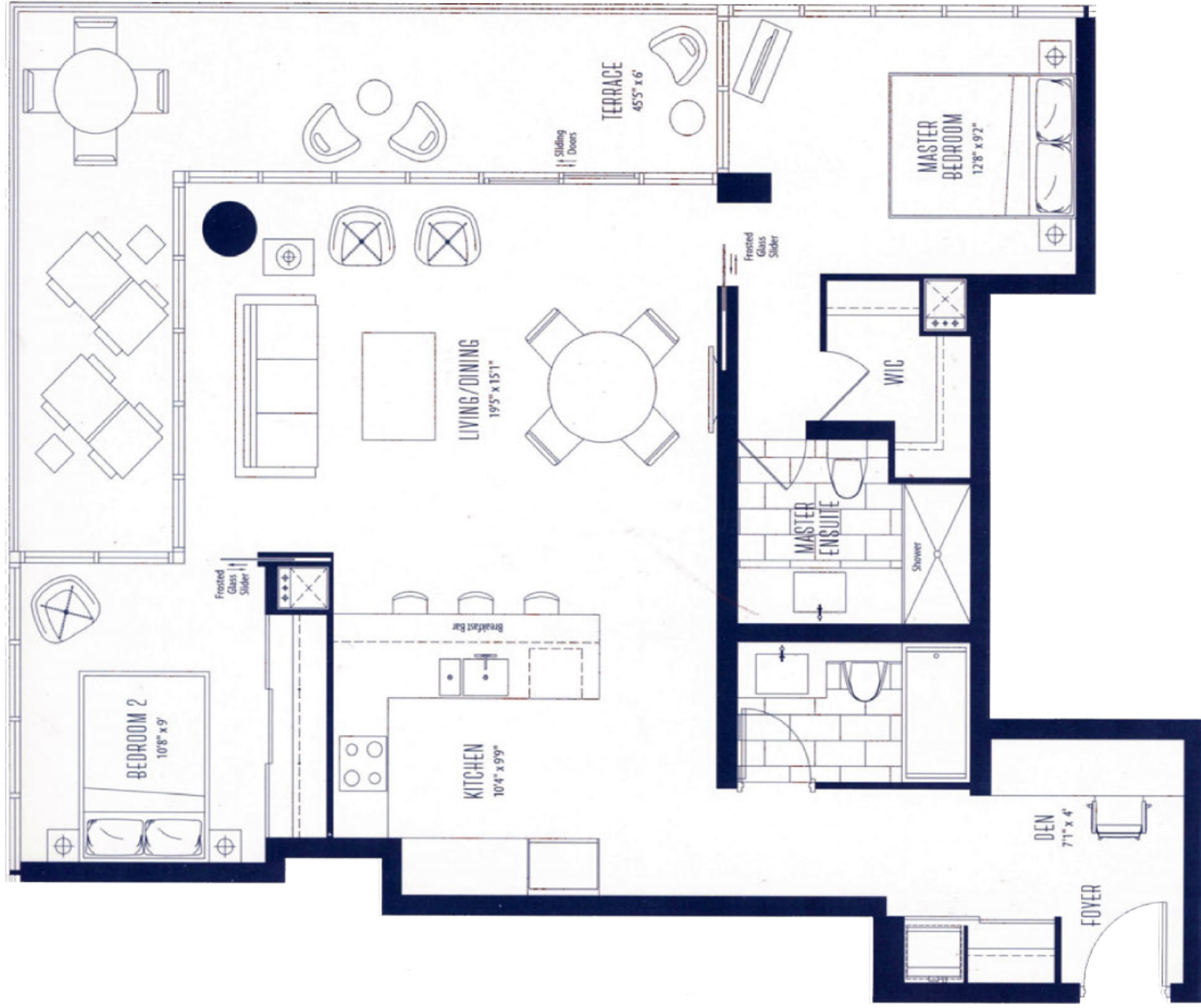


The BILTMORE - 1 Bedroom + Den

Interior: 648 square feet - Terrace: 60 square feet - Total: 708 square feet



Sizes and specifications are subject to change without notice. E.A.B.E. Actual usable space may vary from any stated floor area. All dimensions are subject to normal construction variances. Measurements of rooms set forth on any floor plan are generally taken at the greatest points of each given room (as if the room were a perfect rectangle), without regard for any cutouts. Floor measurements were calculated on the middle floor of typical floor plates.

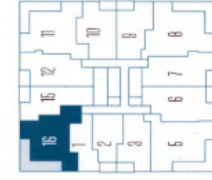
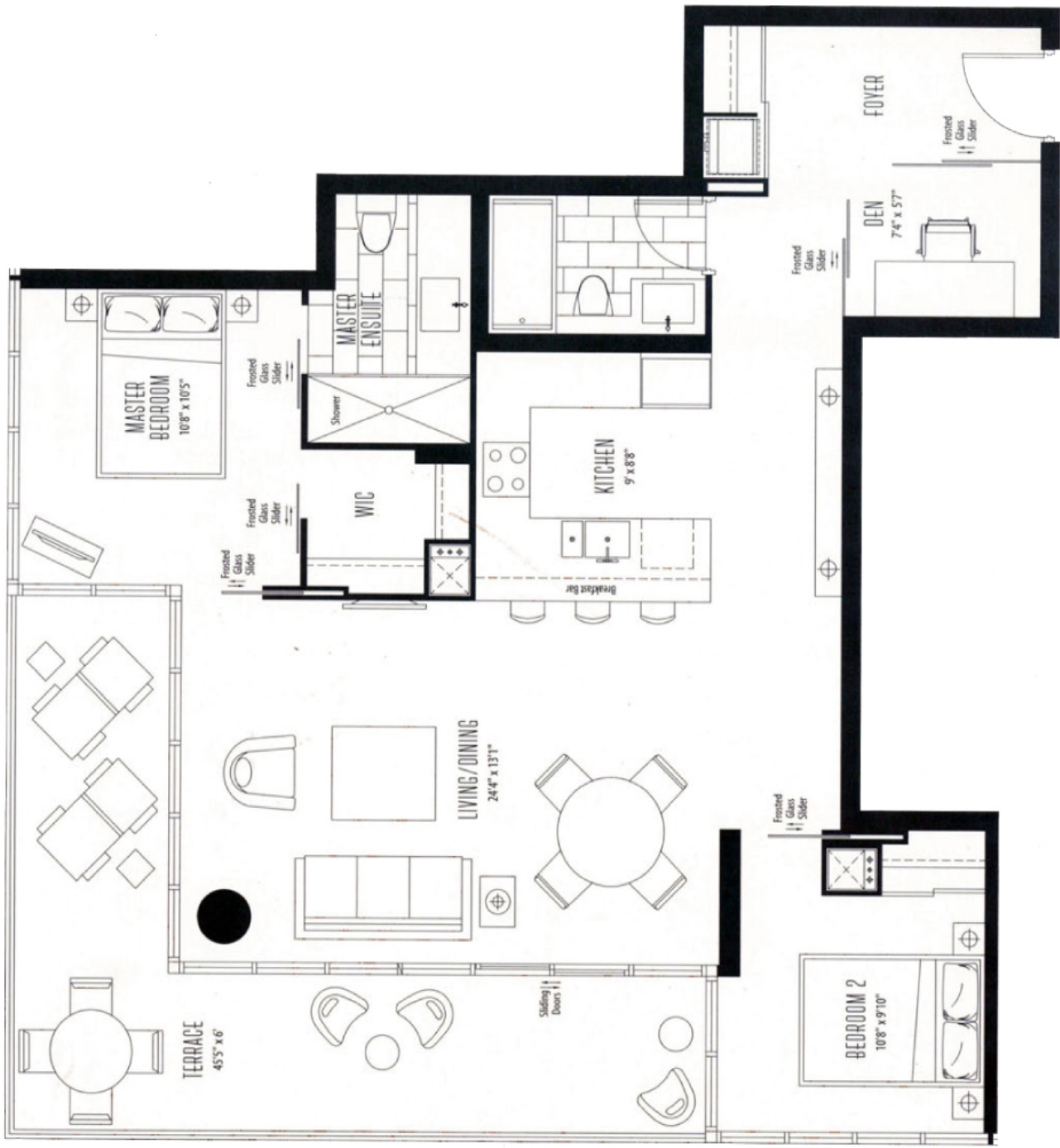


The RALEIGH - 2 Bedroom + Den

Interior: 1004 square feet - Terrace: 287 square feet - Total: 1241 square feet



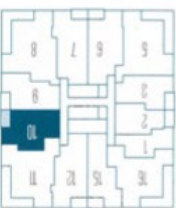
Sizes and specifications are subject to change without notice. E.601E. Actual usable space may vary from any stated floor area. All dimensions are subject to normal construction variances. Measurements of rooms set levels on any floor plan are generally taken at the greatest points of each given room (as if the room were a perfect rectangle), without regard for any cutouts. Floor measurements were calculated on the middle floor of typical floor plans.



The COLLINS - 2 Bedroom + Den

Interior: 971 square feet - Terrace: 237 square feet - Total: 1208 square feet

Size and specifications are subject to change without notice. E.A.O.E. Actual usable space may vary from any stated floor area. All dimensions are subject to normal construction variances. Measurements of rooms set forth on any floor plan are generally taken at the greatest points of each given room (as if the room were a perfect rectangle), without regard for any cabinets. Floor measurements were calculated on the middle floor of typical floor plates.



The VICTOR - 2 Bedroom

Interior: 703 square feet - Terrace: 60 square feet - Total: 763 square feet

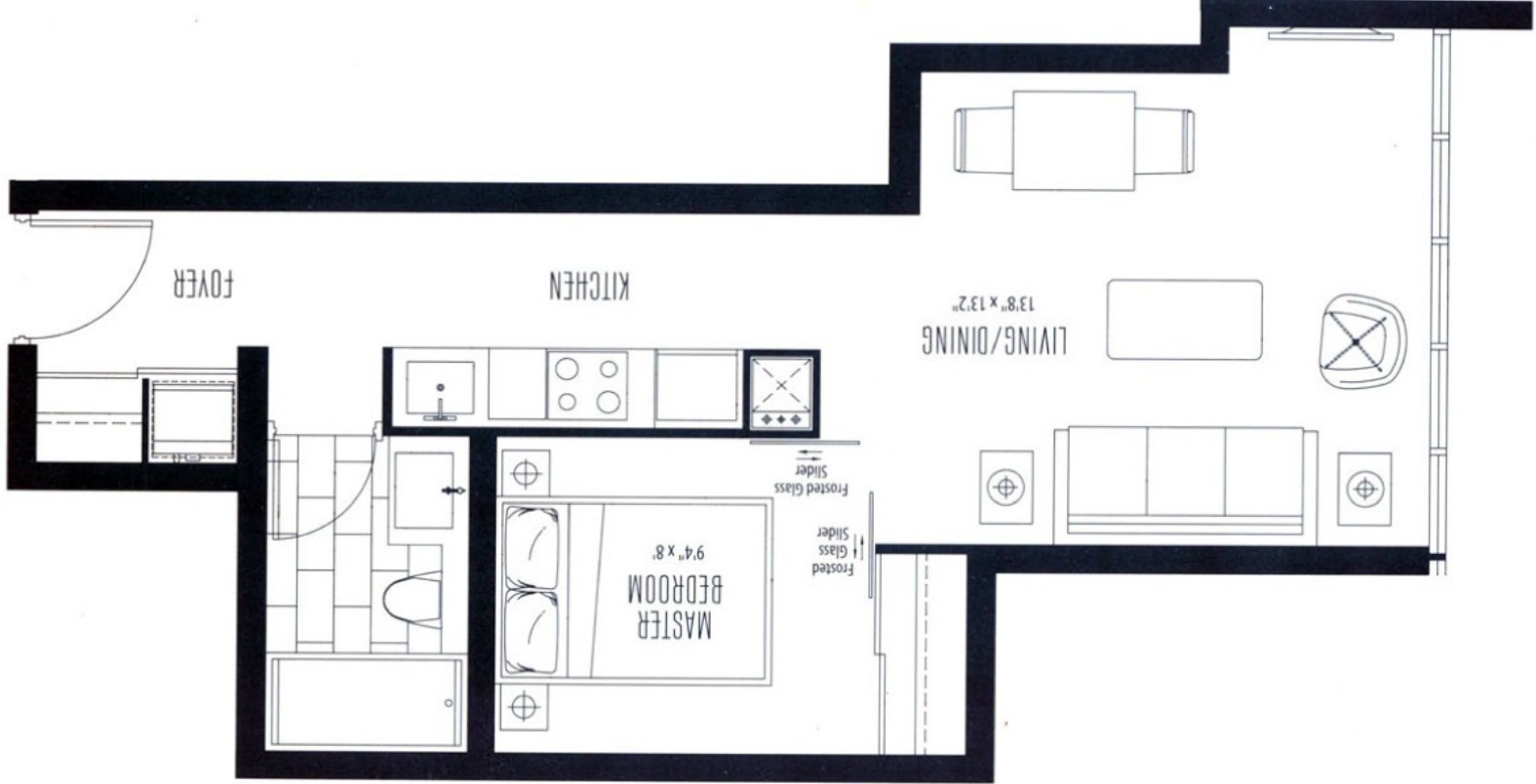


Sizes and specifications are subject to change without notice. E.A.O.E. Actual usable space may vary from any stated floor area. All dimensions are subject to normal construction variances. Measurements of rooms set forth on any floor plan are generally taken at the greatest points of each given room (as if the room were a perfect rectangle), without regard for any closets. Floor measurements were calculated on the middle floor of typical floor plates.

The ASTOR - 1 Bedroom

Total: 454 square feet

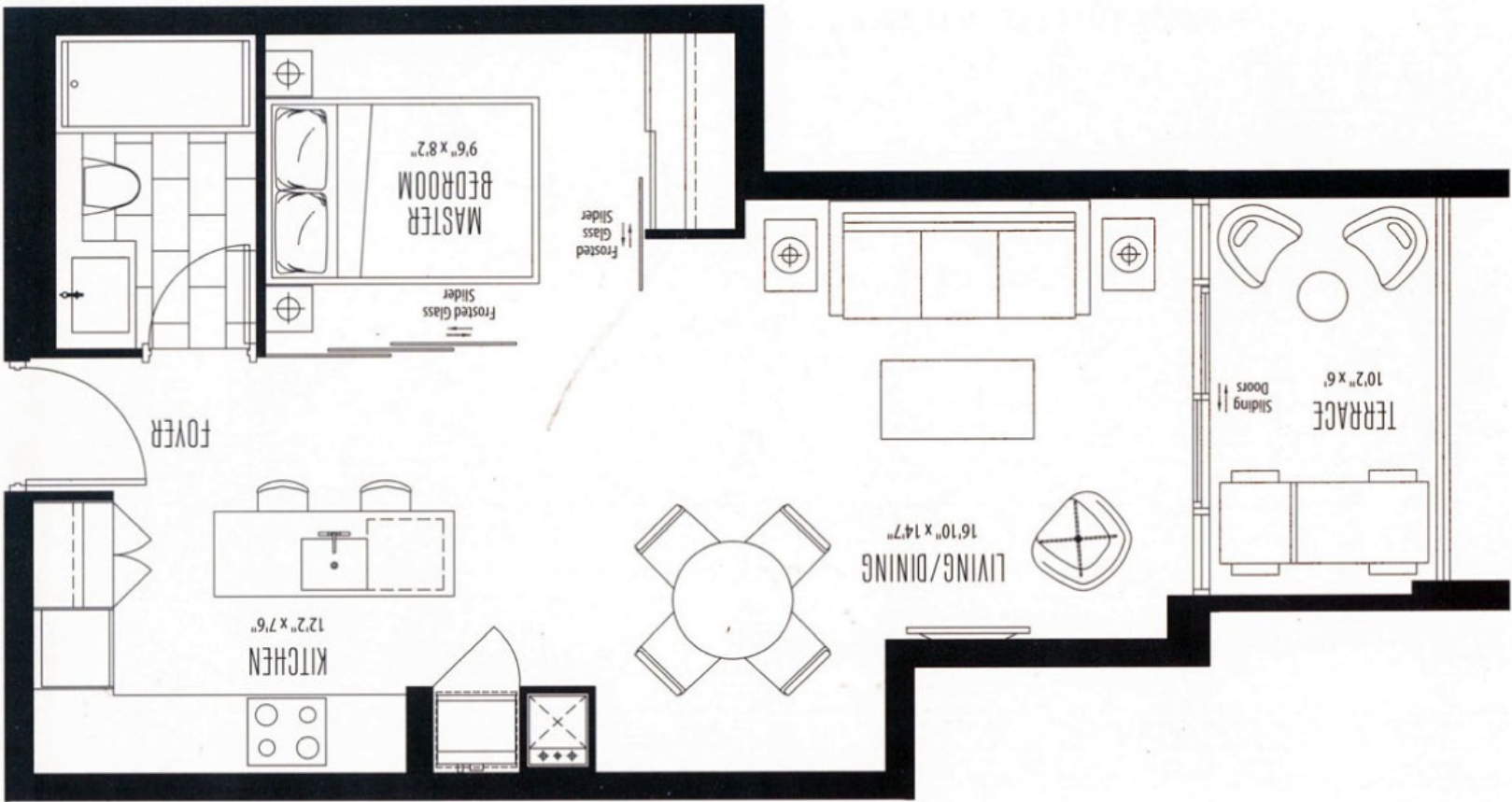
Sizes and specifications are subject to change without notice. L.A.O.T. Actual usable space may vary from any stated floor area. All dimensions are subject to normal construction variances. Measurements of rooms set forth on any floor plan are generally taken at the greatest points of each given room (as if the room were a perfect rectangle), without regard for any closets. Floor measurements were calculated on the middle floor of typical floor plates.





The SEVILLE - 1 Bedroom

Interior: 508 square feet - Terrace: 50 square feet - Total: 558 square feet

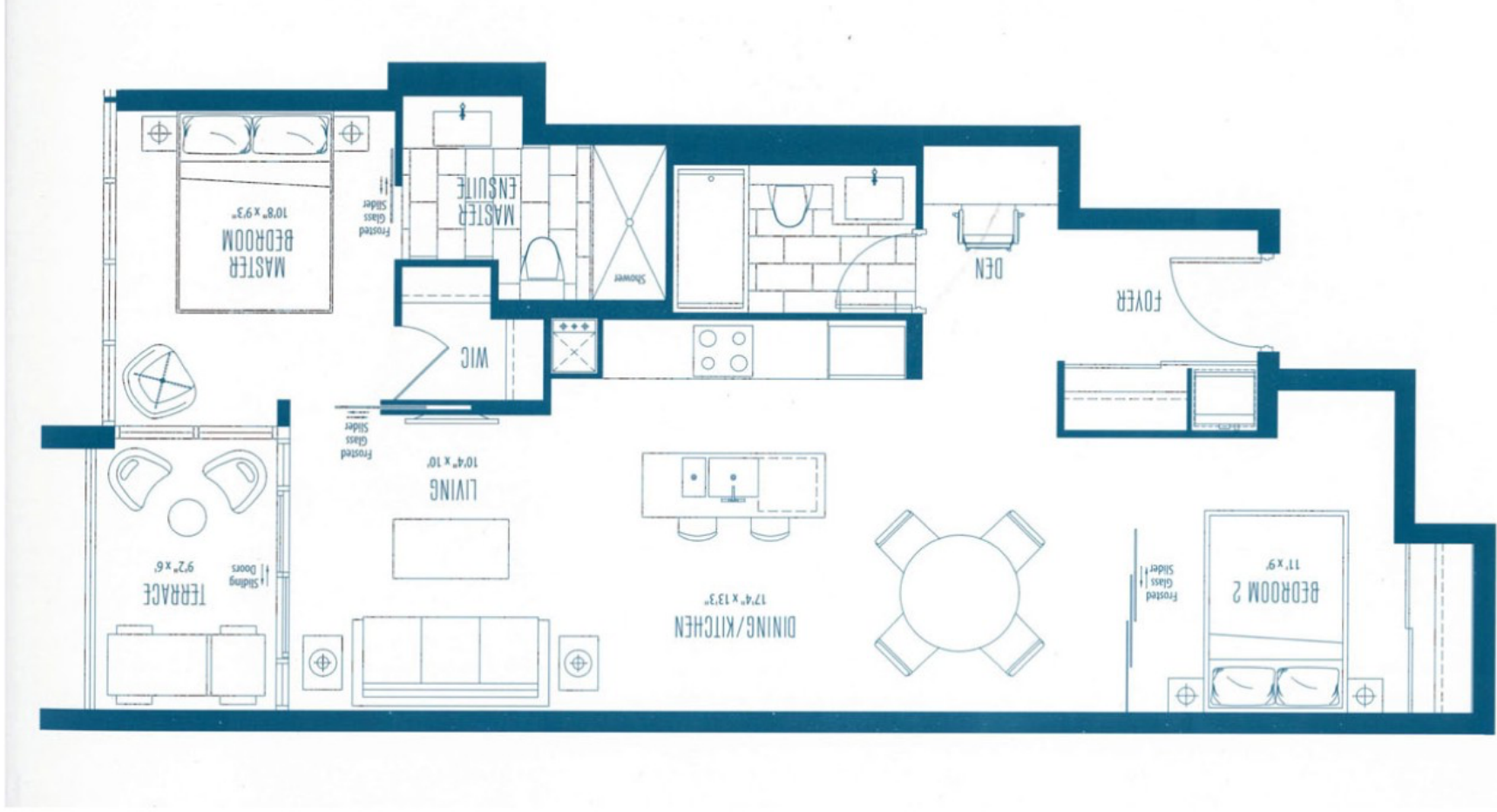


Sizes and specifications are subject to change without notice. E.A.O.E. Actual usable space may vary from any stated floor area. All dimensions are subject to normal construction variances. Measurements of rooms set forth on any floor plan are generally taken at the greatest points of each given room (as if the room were a perfect rectangle), without regard for any alcove. Floor measurements were calculated on the middle floor of typical floor plates.

The COLONY - 2 Bedroom + Den

Interior: 784 square feet - Terrace: 55 square feet - Total: 839 square feet

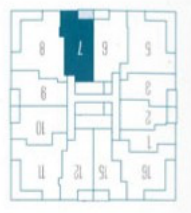
Sizes and specifications are subject to change without notice. F.A.S. Actual usable space may vary from any stated floor area. All dimensions are subject to normal construction variances. Measurements of rooms set forth on any floor plan are generally taken at the greatest points of each given room (as if the room were a perfect rectangle), without regard for any closets. Floor measurements were calculated on the middle floor of typical floor plates.





The TIDES - 2 Bedroom + Den
 Interior: 824 square feet - Terrace: 55 square feet - Total: 879 square feet

Sizes and specifications are subject to change without notice. E.A.D.C. Actual usable space may vary from any stated floor area. All dimensions are subject to normal construction variances. Measurements of rooms set forth on any floor plan are generally taken at the greatest points of each given room (as if the room were a perfect rectangle), without regard for any closets. Floor measurements were calculated on the middle floor of typical floor plates.

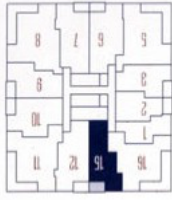




The AVALON - 1 Bedroom + Den

Interior: 659 square feet - Terrace: 55 square feet - Total: 714 square feet

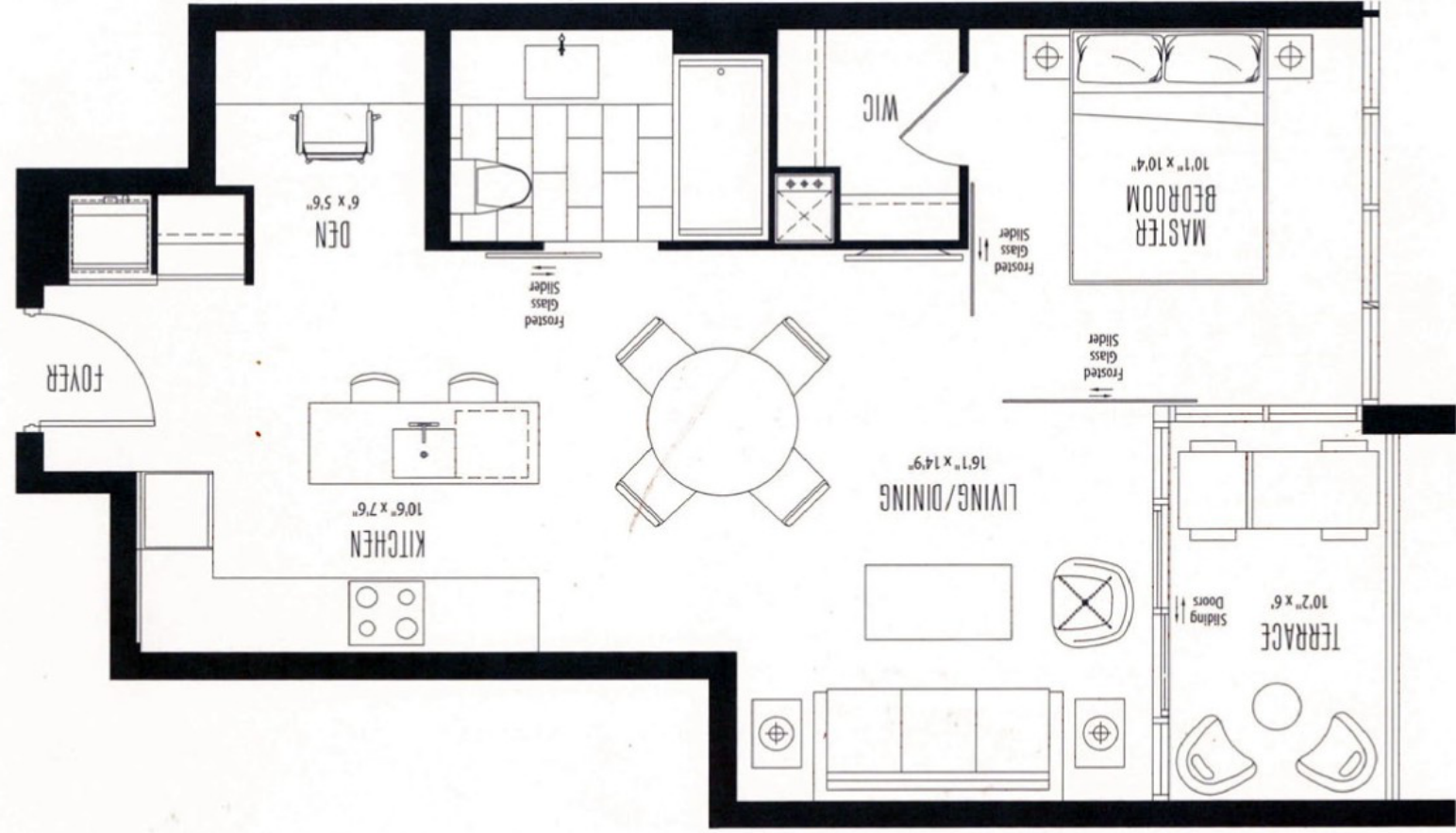
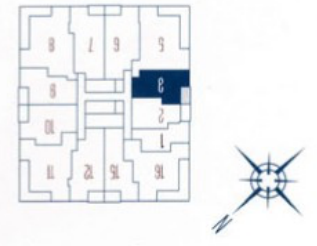
Sizes and specifications are subject to change without notice. E.O.D.E. Actual usable space may vary from any issued floor plan. All dimensions are subject to normal construction variances. Measurements of rooms set forth on any floor plan are generally taken at the greatest points of each given room (as if the room were a perfect rectangle), without regard for any cutouts. Floor measurements were calculated on the middle floor of typical floor plates.



The PALMS - 1 Bedroom + Den

Interior: 580 square feet - Terrace: 50 square feet - Total: 630 square feet

Views and specifications are subject to change without notice. E-Book. Actual usable space may vary from any stated floor area. All dimensions are subject to normal construction variances. Measurements of rooms set forth on any floor plan are generally taken at the greatest points of each given room (as if the room were a perfect rectangle), without regard for any closets. Floor measurements were calculated on the middle floor of typical floor plans.



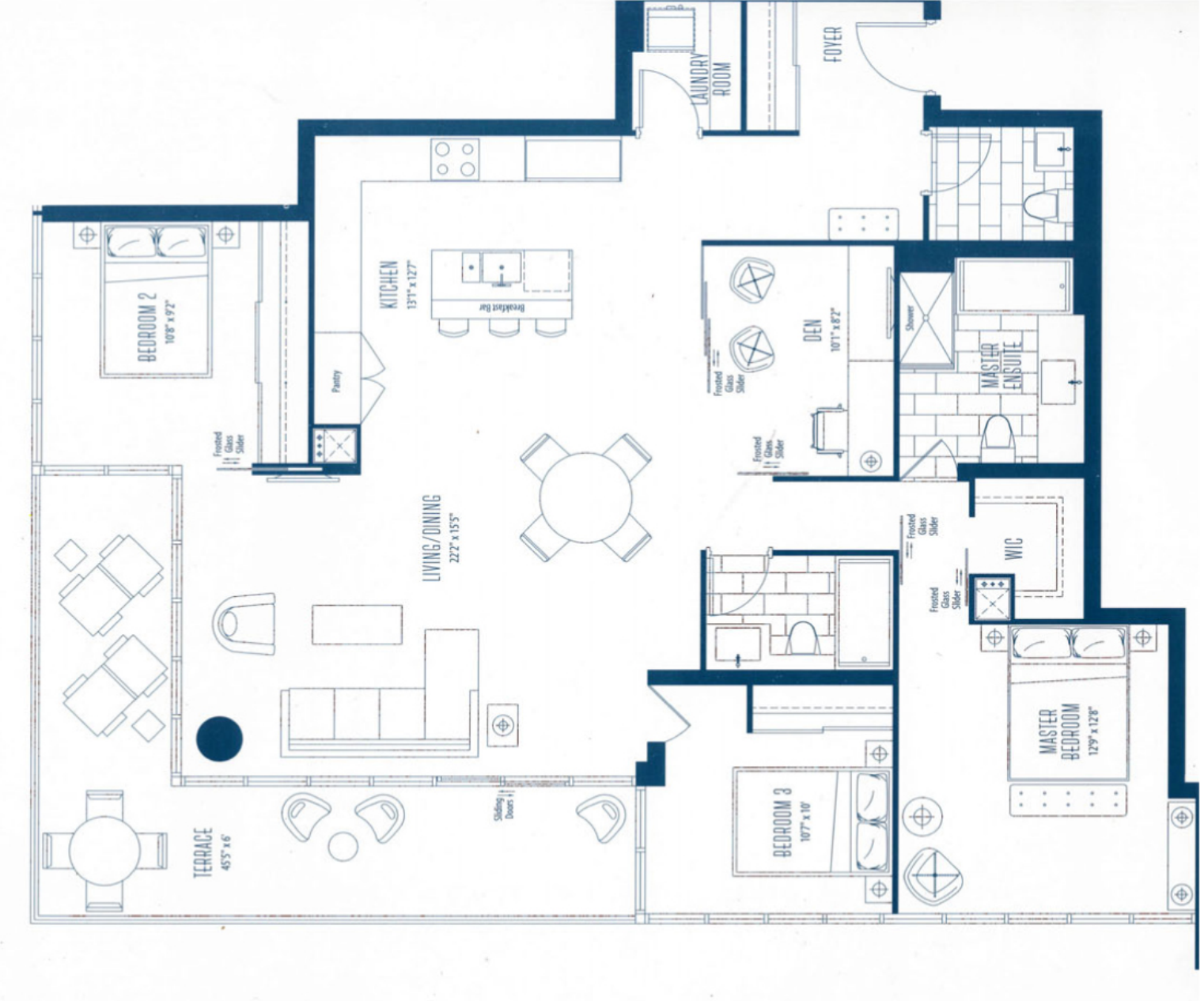


The DELANO - 2 Bedroom + Den

Interior: 1106 square feet - Terrace: 242 square feet - Total: 1348 square feet



Site and specifications are subject to change without notice. E.S.O.E. Actual usable space may vary from any stated floor area. All dimensions are subject to normal construction variances. Measurements of rooms set forth on any floor plan are generally taken at the greatest points of each given room (as if the room were a perfect rectangle), without regard for any cutouts. Floor measurements were calculated on the middle floor of typical floor plates.



The SETAI - 3 Bedroom + Den

Interior: 1427 square feet - Terrace: 287 square feet - Total: 1664 square feet

Site and specifications are subject to change without notice. E.A.O.E. Actual usable space may vary from any stated floor area. All dimensions are subject to normal construction variances. Measurements of rooms set forth on any floor plan are generally taken at the greatest points of each given room, as if the room were a perfect rectangle, without regard for any columns. Floor measurements were calculated on the middle floor of typical floor plates.