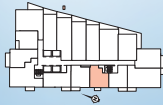
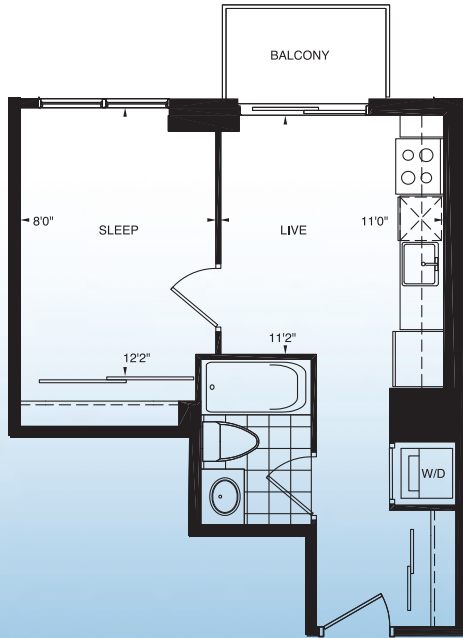


**BRIDGE**  
KING-QUEEN CONDOMINIUMS

# skyview 5

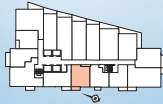
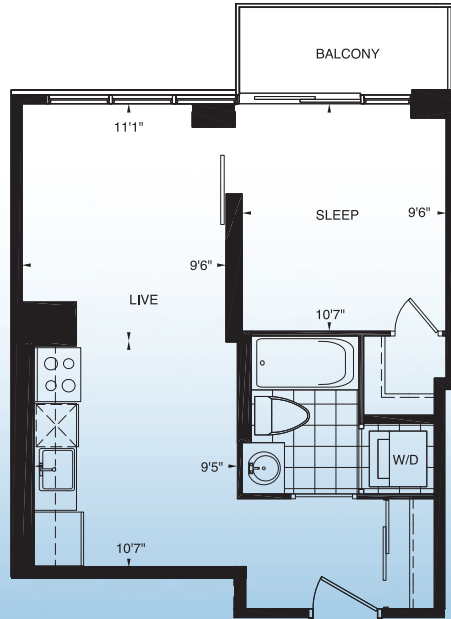
420 SQ. FT. / ONE BEDROOM



**BRIDGE**  
KING-QUEEN CONDOMINIUMS

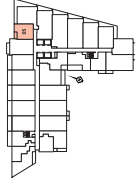
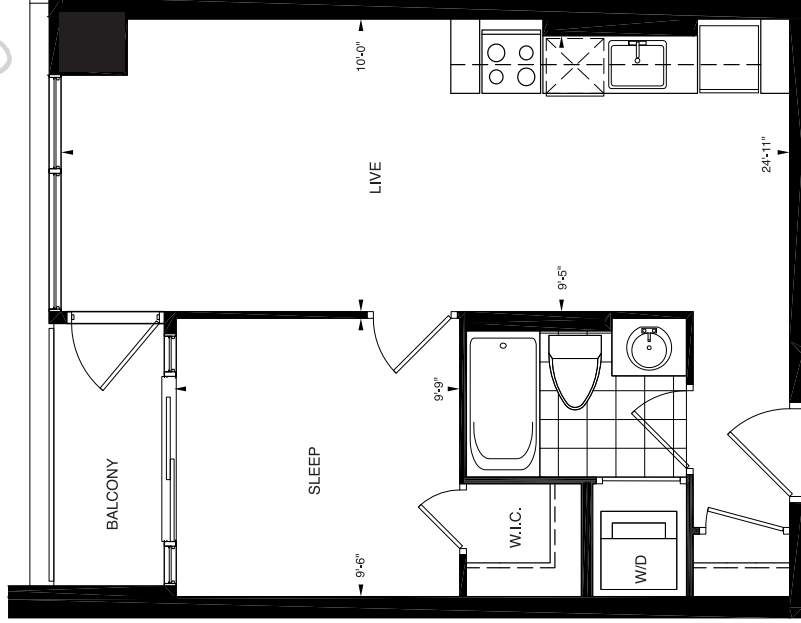
# skyview 4

485 SQ. FT. / ONE BEDROOM



# Q2X-05

500 SQ. FT.  
ONE BEDROOM

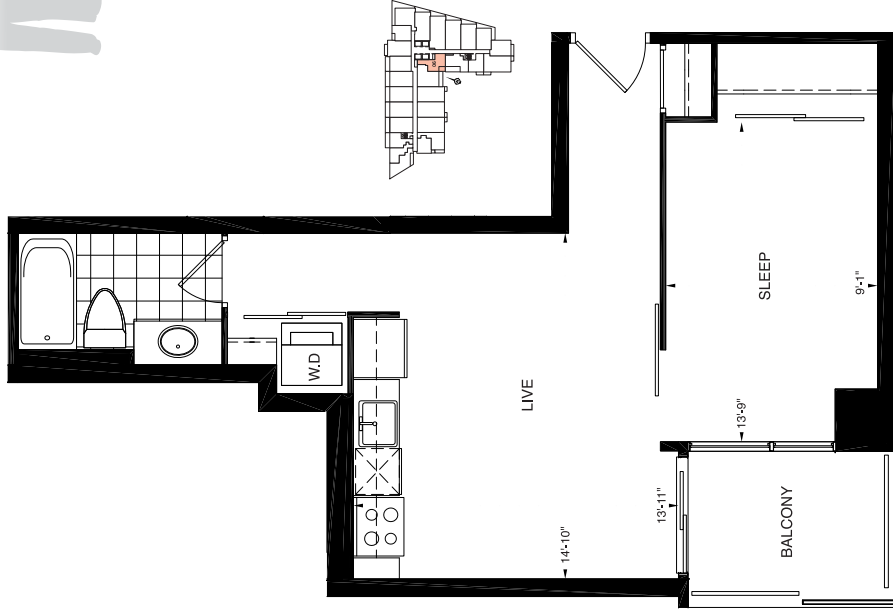


© 2014 Q2X  
All rights reserved.  
Q2X is a registered trademark of Q2X.  
Q2X is a registered trademark of Q2X.  
Q2X is a registered trademark of Q2X.

34" X 55"

# QX-06

540 SQ. FT.  
ONE BEDROOM

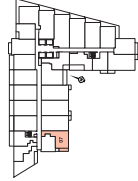
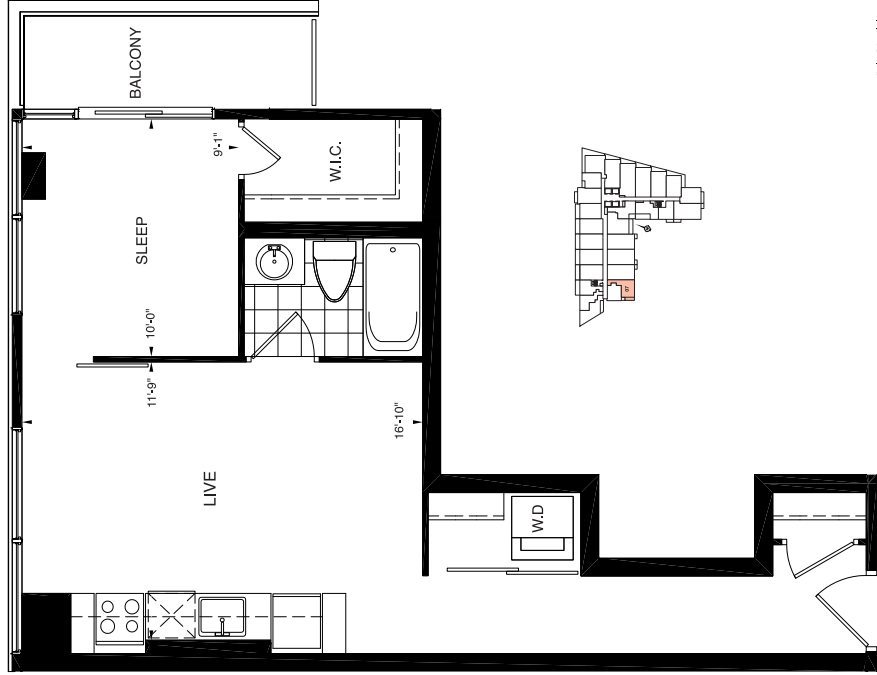


© 2014 QX Properties, Inc.  
All rights reserved.  
QX Properties, Inc.  
10000 QX Blvd.  
QX, TX 75080

34" X 55"

# QX-07

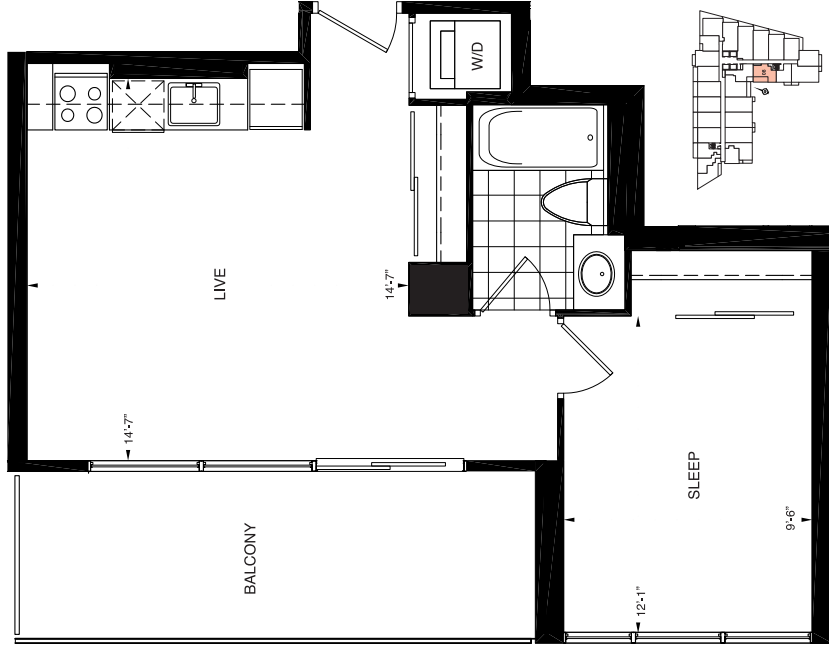
540 SQ. FT.  
ONE BEDROOM



34" X 55"

# QX-08

550 SQ. FT.  
ONE BEDROOM



© 2014 QX Properties, LLC  
All rights reserved.  
QX Properties, LLC  
1111 1st Street, Suite 100  
San Francisco, CA 94103

34" x 55"

# QX-18

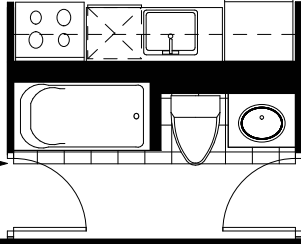
570 SQ. FT.  
ONE BEDROOM

13'-1"

BALCONY

LIVE

14'-9"

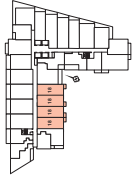


9'0"

SLEEP

11'0"

W/D



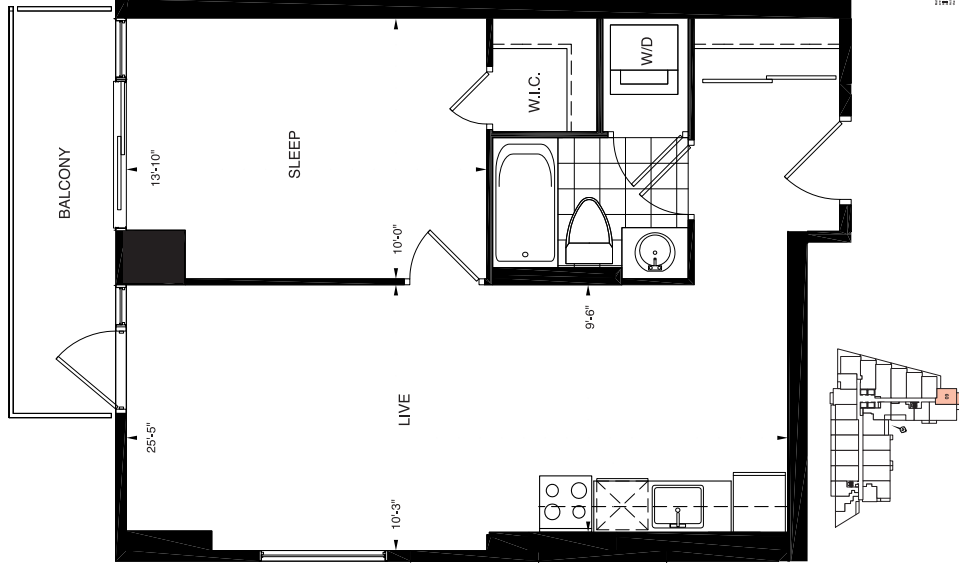
© 2018 QX-18  
11111 11111 11111  
11111 11111 11111  
11111 11111 11111

SUITE 11A

33" X 53 3/8"

# QX-09

590 SQ. FT.  
ONE BEDROOM



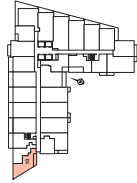
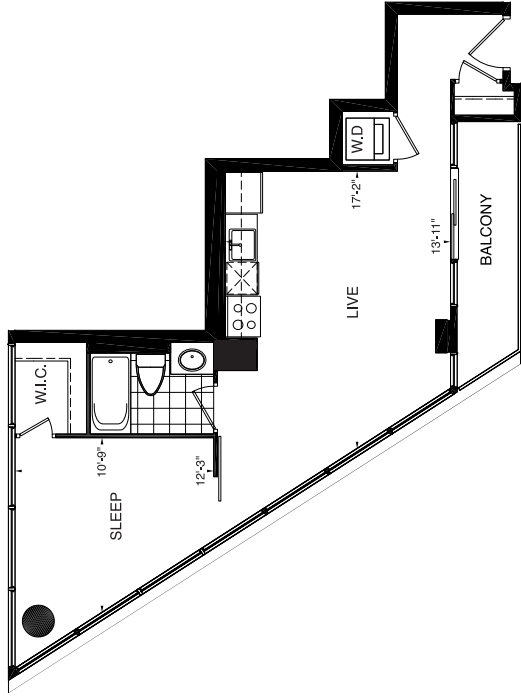
© 2014 QX-09  
590 SQ. FT.  
ONE BEDROOM

34" X 55"



# QX-10

600 SQ. FT.  
ONE BEDROOM

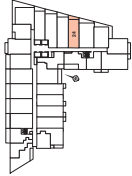
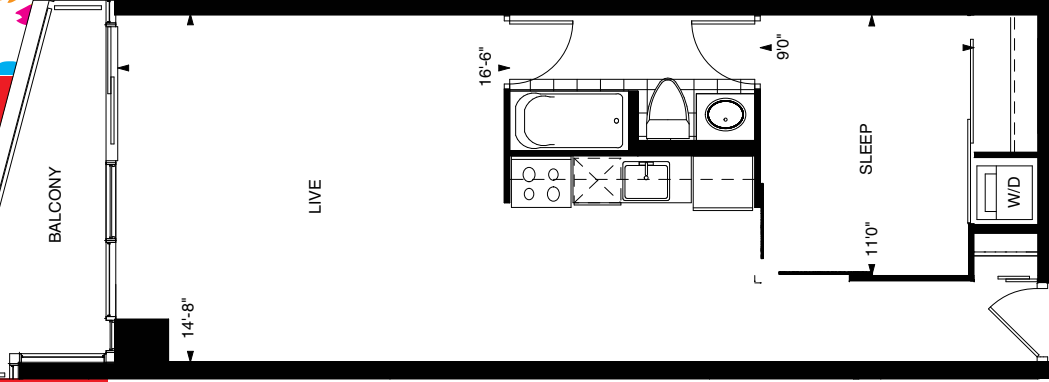
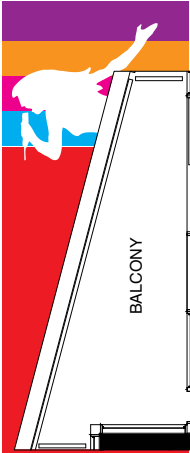


© 2010 QX-10  
All rights reserved.  
QX-10 is a registered trademark of QX-10.  
QX-10 is a registered trademark of QX-10.  
QX-10 is a registered trademark of QX-10.

34" X 55"

# QX-24

625 SQ. FT.  
ONE BEDROOM



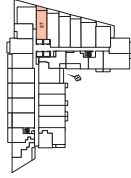
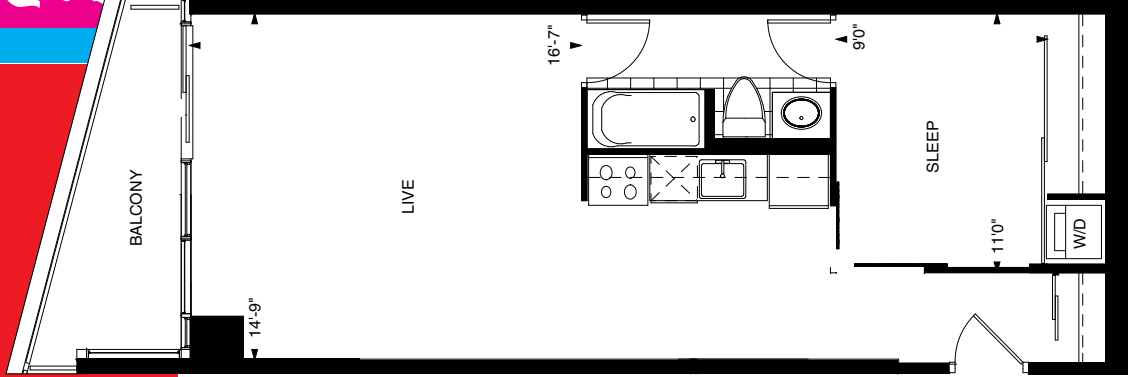
© 2014 QX-24  
All rights reserved.  
QX-24 is a registered trademark of QX-24.  
QX-24 is a registered trademark of QX-24.

SUITE 02

33" X 53 3/8"

# QX-27

620 SQ. FT.  
ONE BEDROOM



© 2018 QX Properties, Inc. All rights reserved. QX Properties, Inc. is a registered service mark of QX Properties, Inc. QX Properties, Inc. is a registered service mark of QX Properties, Inc. QX Properties, Inc. is a registered service mark of QX Properties, Inc.

## SUITE 27

33" X 53 3/8"

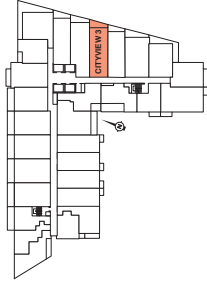
# BRIDGE

KING-QUEEN CONDOMINIUMS

## CITYVIEW 3

690 SQ. FT.

ONE BEDROOM + DEN

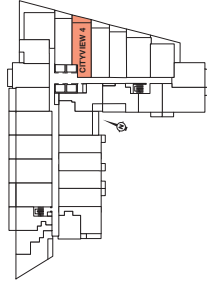


**URBANCORP.**

Materials, specifications, and floor plans are subject to change without notice. All renderings are artist's conceptions. Actual usable floor space may vary from the stated floor area. E.A.O.E.

**BRIDGE**  
KING-QUEEN CONDOMINIUMS

**CITYVIEW 4**  
700 SQ. FT.  
ONE BEDROOM + DEN

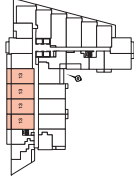
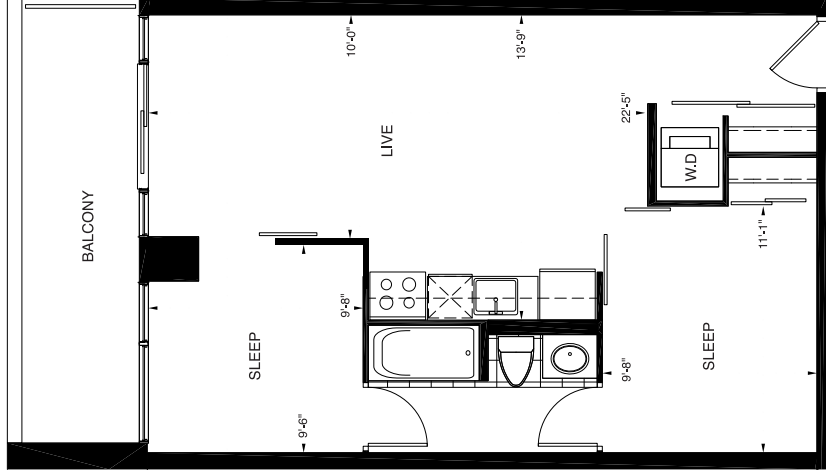


**URBANCORP.**

Materials, specifications, and floor plans are subject to change without notice. All renderings are artist's conceptions. Measurements are approximate only. Actual usable floor space may vary from the stated floor area. E.B. O.E.

# Q2K-13

650 SQ. FT.  
TWO BEDROOM

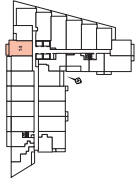
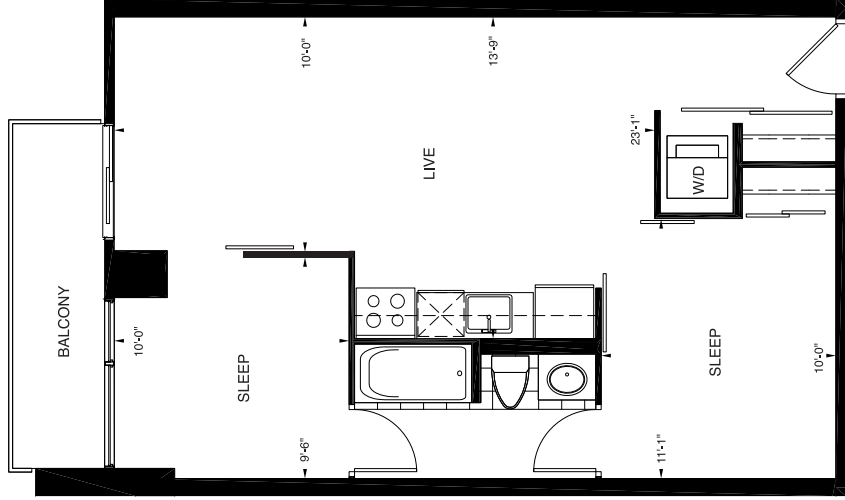


© 2013 The Home Depot U.S.A., Inc.  
All rights reserved. Home Depot, the Home Depot logo, and Q2K are trademarks of The Home Depot U.S.A., Inc.  
Q2K-13 is a registered trademark of The Home Depot U.S.A., Inc.

34" x 55"

# QX-14

675 SQ. FT.  
TWO BEDROOM



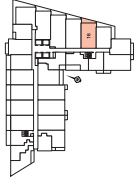
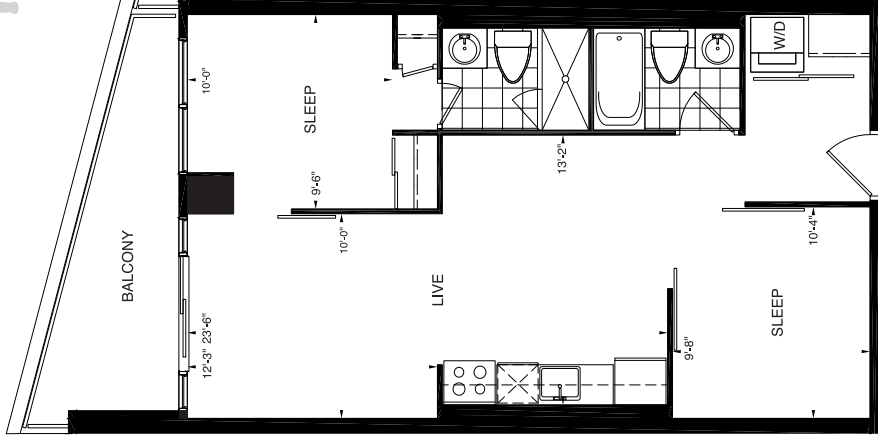
QX-14  
675 SQ. FT.  
TWO BEDROOM

34" X 55"



# QX-16

725 SQ. FT.  
TWO BEDROOM



© 2016 QX Properties, Inc.  
All rights reserved. QX Properties, Inc.  
10000 10th Avenue, Suite 1000, Denver, CO 80202  
Tel: 303.733.1000

34" X 55"



# QX-20

830 SQ. FT.  
TWO BEDROOM

