

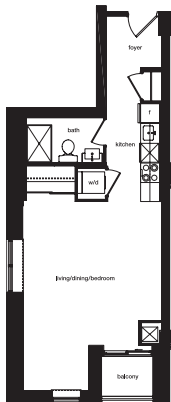
# flat6

interior 540 sq.ft.  
balcony 27 sq.ft.

total 567 sq.ft.

bachelor

○  
2



floor 3

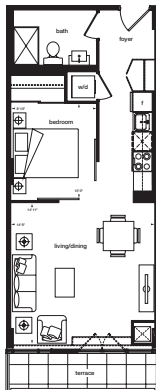


Sizes and specifications are subject to change without notice. E. & O.E. Actual usable space may vary from any stated floor area. All dimensions are approximate and are subject to normal construction variances. Measurements of rooms set forth on any floor plan may be taken at the widest points of each given room (as if the room were a perfect rectangle), without regard for any cabinets or casework, in-wall to wall. Floor measurements were calculated on the middle floor of typical floor plates.

# flat3&4

interior 556 sq.ft.  
balcony 55 sq.ft. total 611 sq.ft.  
one bedroom

○  
2



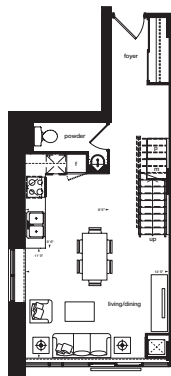
floor 4,5,6 

Sizes and specifications are subject to change without notice. E. S.O.E. Actual usable space may vary from any stated floor area. All dimensions are approximate and are subject to normal construction variances. Measurements of rooms set forth on any floor plan may be taken at the widest points of each given room (as if the room were a perfect rectangle), without regard for any cutouts or cabinetry. In-wall closets. Floor measurements were calculated on the middle floor of typical floor plates.

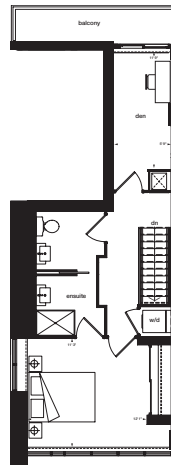
# maisonette6

interior 1040 sq.ft.  
balcony 55 sq.ft. **total 1095 sq.ft.**  
one bedroom + den

○  
2



lower floor



upper floor



floor 7, 9, 11



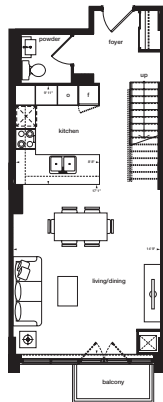
floor 8, 10, 12

**n**

# maisonette<sup>2</sup>

interior 1185 sq.ft. balcony 27 sq.ft. total 1212 sq.ft.  
two bedroom

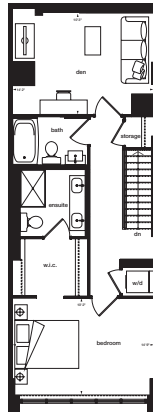
○  
2



lower floor



floor 7, 9, 11



upper floor



floor 8, 10, 12

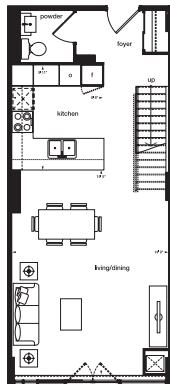


Sizes and specifications are subject to change without notice. E. S.O.E. Actual usable space may vary from any stated floor area. All dimensions are approximate and are subject to normal construction variances. Measurements of rooms set forth on any floor plan may be taken at the widest points of each given room (as if the room were a perfect rectangle), without regard for any cutouts or cabinetry, in wall to wall. Floor measurements were calculated on the middle floor of typical floor plates.

# maisonette 4&5

interior 1205 sq.ft.  
balcony 55 sq.ft. total 1260 sq.ft.  
two bedroom

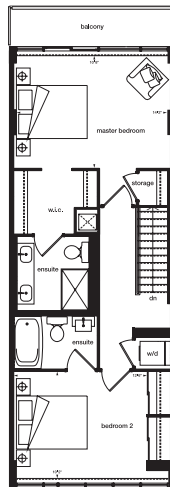
2



lower floor



floor 7, 9, 11



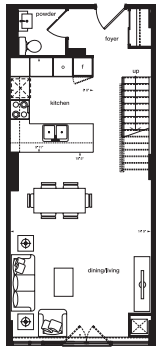
upper floor



floor 8, 10, 12

# maisonette3

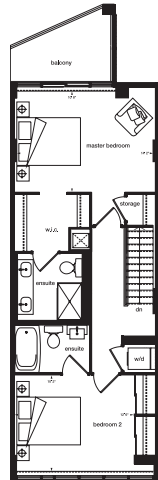
interior 1205 sq.ft.  
 balcony 60 sq.ft. total 1265 sq.ft.  
 two bedroom



lower floor



floor 7, 9, 11



upper floor



floor 8, 10, 12

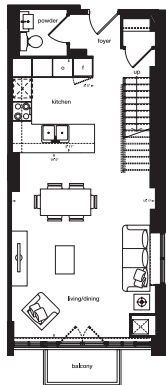


Sizes and specifications are subject to change without notice. E. S.O.E. Actual usable space may vary from any stated floor area. All dimensions are approximate and are subject to normal construction variances. Measurements of rooms set forth on any floor plan may be taken at the widest points of each given room (as if the room were a perfect rectangle), without regard for any cutouts or cabinetry. In-wall-to-wall. Floor measurements were calculated on the middle floor of typical floor plates.

# maisonette<sup>1</sup>

interior 1250 sq.ft.  
balcony 27 sq.ft. total 1277 sq.ft.  
two bedroom

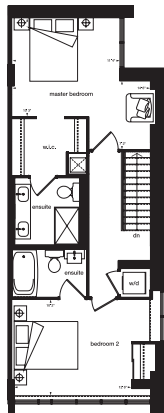
○  
2



lower floor



floor 7, 9, 11



upper floor



floor 8, 10, 12

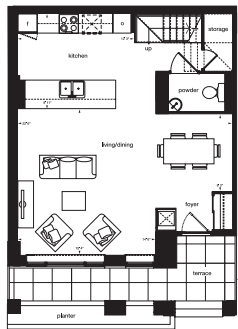


Sizes and specifications are subject to change without notice. E. S.O.E. Actual usable space may vary from any stated floor area. All dimensions are approximate and are subject to normal construction variances. Measurements of rooms set forth on any floor plan may be taken at the widest points of each room (as if the room were a perfect rectangle), without regard for any cutouts or cabinetry, in wall to wall. Floor measurements were calculated on the middle floor of typical floor plates.

# townhome2

interior 1550 sq.ft.  
terrace 100 sq.ft.  
balcony 25 sq.ft.

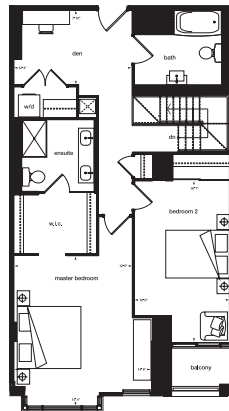
total 1675 sq.ft.  
two bedroom + den



lower floor



ground floor



upper floor



floor 2



Sizes and specifications are subject to change without notice. E. S.O.E. Actual usable space may vary from any stated floor area. All dimensions are approximate and are subject to normal construction variances. Measurements of rooms set forth on any floor plan may be taken at the widest points of each green room (as if the room were a perfect rectangle), without regard for any cutouts or cabinetry, in wall to wall. Floor measurements were calculated on the middle floor of typical floor plates.

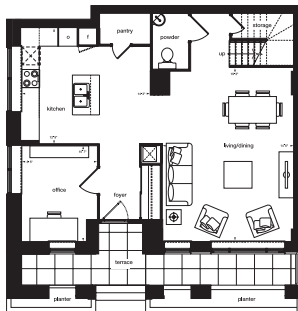


# townhome3

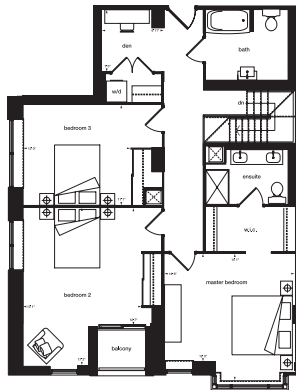
interior 2040 sq.ft.  
terrace 120 sq.ft.  
balcony 25 sq.ft.

total 2185 sq.ft.  
three bedroom + office + den

2



lower floor



upper floor



ground floor



floor 2

Sizes and specifications are subject to change without notice. E. S.O.E. Actual usable space may vary from any stated floor area. All dimensions are approximate and are subject to normal construction variances. Measurements of rooms set forth on any floor plan may be taken at the widest points of each room (as if the room were a perfect rectangle), without regard for any cutouts or cabinetry, in wall to wall. Floor measurements were calculated on the middle floor of typical floor plates.